

AMAXE

Innovation | Precision | Consistency

Electric-Permanent Magnetic Chuck





01

COMPANY PROFILE

02

PRODUCT INTRODUCTION

03

CASE SHARING

04

INTERACTIVE TIME

AMAXE

Innovation | Precision | Consistency

PART 1

COMPANY PROFILE

AMAXE
Innovation | Precision | Consistency

GLOBAL
STANDARDIZATION
MOULD COMPONENTS

ONE STOP
SERVICE PLATFORM

Amaxe Technologies Pvt. Ltd.

www.amaxetech.com

AMAXE
Innovation | Precision | Consistency

ONE-STOP SOLUTION OF MOULD COMPONENTS&DESIGN

Amaxe Technologies Pvt. Ltd. Founder of New Delhi 2010 It' s a manufacturing service provider that provides one-stop parts technology solutions for the global high-end mould, injection molding, stamping, machining and other manufacturing industries.

MAIN BUSINESSES

01 Plastic Mould Design Standards

Standard Parts/Non-standard customization/
Moulding Automation/3D Metal Printing

02 Die Mould Design Standards

Gas spring/Standard Parts/
Non-standard customization

03 Automation Parts

Laser equipment/Drive reduction gear/
Intelligent vision equipment/New energy/
Robotics field

04 Machine Tooling

Quick Clamping Products/Precision Parts/
Tooling Fixtures



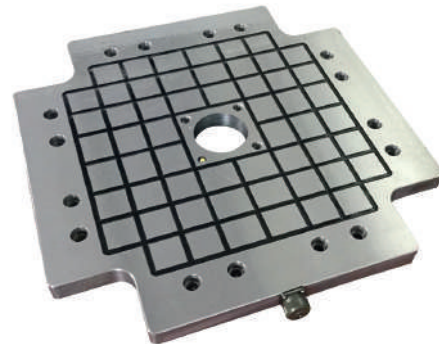
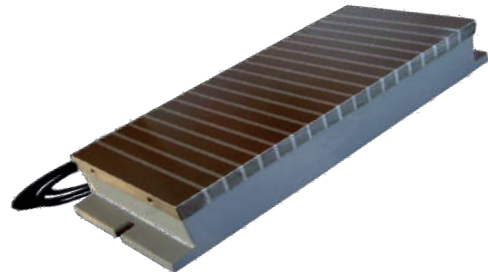
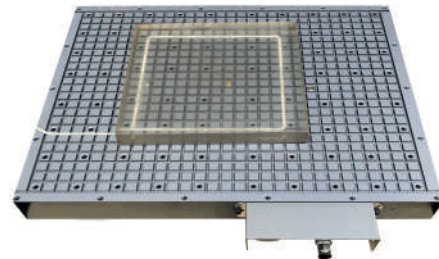
PROCESSING CAPACITY

AMAXE
Innovation | Precision | Consistency



PROCESSING CAPACITY





How to choose the right clamping tool?

AMAXE

Innovation | Precision | Consistency

PART 2

PRODUCT INTRODUCTION

AMAXE
Innovation | Precision | Consistency

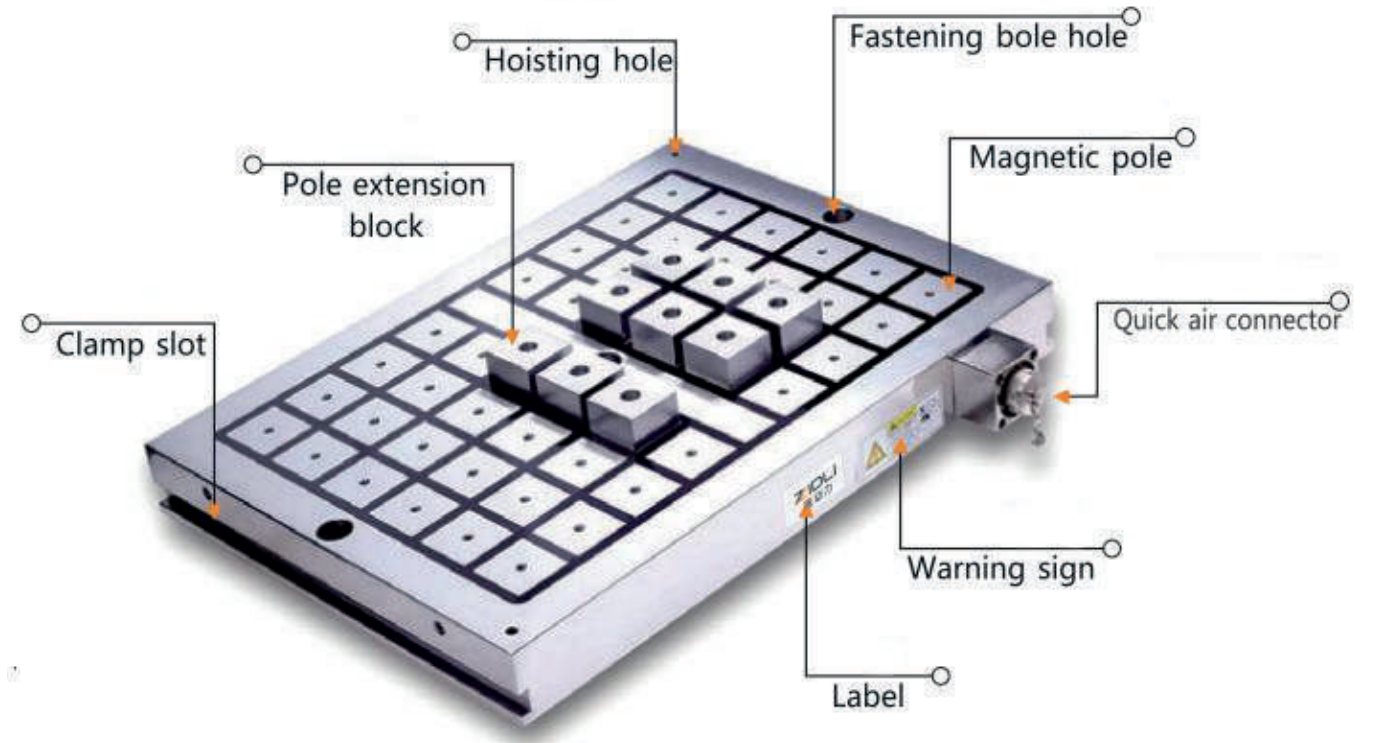
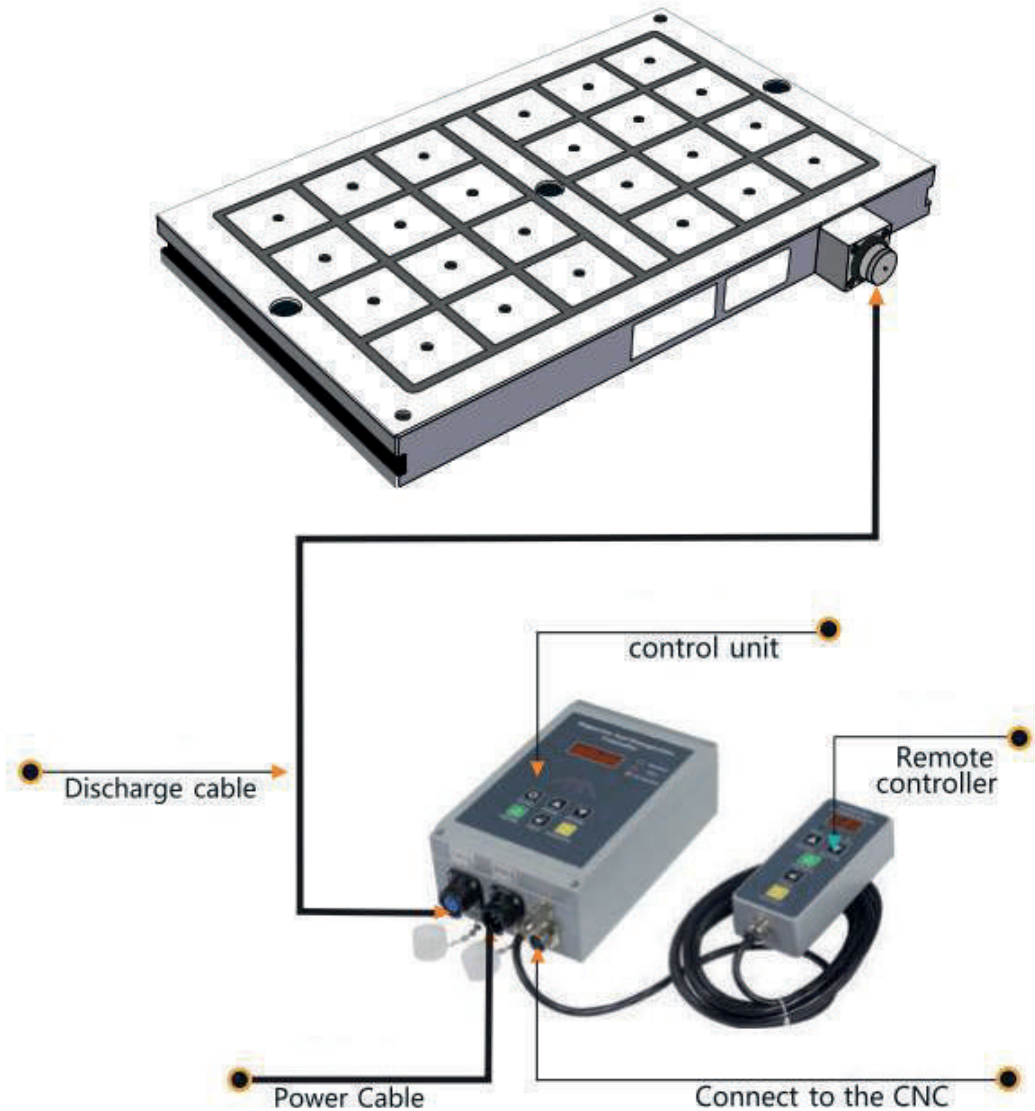
**GLOBAL
STANDARDIZATION
MOULD COMPONENTS**

**ONE STOP
SERVICE PLATFORM**

Amaxe Technologies Pvt. Ltd.

www.amaxetech.com

BASIC COMPOSITION



Clamping force > 16.5kg / cm²

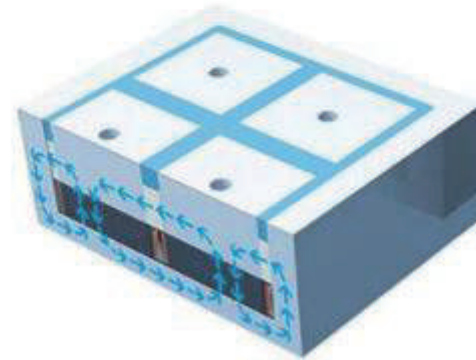
WORKING PRINCIPLE

By using the different characteristics of different permanent magnet materials, **the distribution of its internal magnetic circuit is controlled and transformed through the electronic control system**, so that the permanent magnet field is self-balanced in the system, and externally characterized as the state of degaussing and relaxing.

Or released to the working magnetic pole surface of the electric permanent magnet, which is externally characterized as a magnetically clamped state. Therefore, it is also called electronically controlled permanent magnet.



Magnetizing state



Demagnetization state

CHARACTERISTICS



Energy saving

**Energy saving more than 95%.
Charge and demagnetize instantly.
No power consumption at other times.**



Environmental protection

Clean energy without pollution.



Optimization

**To reduce labor intensity.
To improve the machine's using ability**



High efficiency

**Improve efficiency more than 85%.
One-time clamping can realize multi-
face processing.**



Stable

**Work pieces are evenly stressed
without heating.
Accumulation accuracy, high quality.**



Safe

**Lost power 20 years but still keep
magnetism, super constant holding
power.**

EPM50 SERIES PARAMETER

Square magnet 50*50mm, clamping force > 16.5kg / cm²

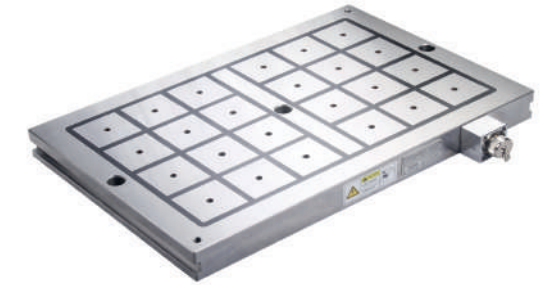
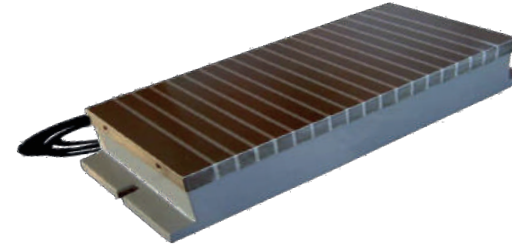
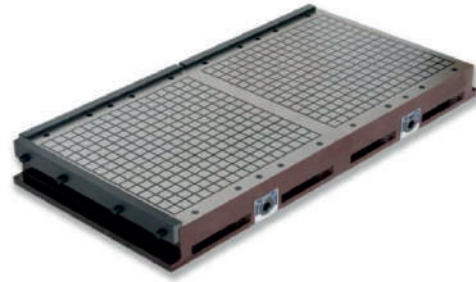
Type	Length	Width	Height	Poles	(Kg) NetWeight
EPM 50-303	327	315	58	16	54
EPM 50-304	436	315	58	24	78
EPM 50-305	496	315	58	28	85
EPM 50-306	595	315	58	32	99
EPM 50-405	490	430	58	36	112
EPM 50-406	605	436	58	48	120
EPM 50-408	775	436	58	60	179
EPM 50-505	510	500	58	42	135
EPM 50-506	605	500	58	56	160
EPM 50-508	770	500	58	70	204
EPM 50-510	1010	500	58	98	267
EPM 50-606	615	600	58	72	195
EPM 50-608	625	770	58	90	255

EPM75 SERIES PARAMETER

Square magnet 75*75mm, clamping force > 16.5kg / cm²

Type	Length	Width	Height	Poles	(Kg) NetWeight
EPM75-304	320	410	58	12	69
EPM75-404	420	420	58	16	93
EPM75-405	420	510	58	20	113
EPM75-406	420	630	58	24	120
EPM75-408	420	810	58	32	180
EPM75-505	500	510	58	25	113
EPM75-506	500	630	58	30	167
EPM75-508	500	810	58	40	215
EPM75H510	500	1010	68	50	265
EPM75-608	600	810	68	48	255
EPM75H610	600	1020	68	60	324

DIFFERENCE OF CHUCKS



	Powerful permanent magnet chuck	Electric magnetic chuck	Electric-Permanent Magnetic Chuck
Operating mode	Manual operation	On or off	Controller operation
Magnetic magnitude	12kg/cm ²	12kg/cm ²	18kg/cm ² & 25kg/cm ²
Magnetic field line range	Magnetic field line height 10-12mm Suitable for workpieces over 15mm	Magnetic field line height 6mm Suitable for workpieces over 6mm	Magnetic field line height 20mm, Suitable for workpieces over 15mm
Operating temperature	No temperature effect	Variable heat	Keep at room temperature
Applicable machine	CNC & Milling machine	Grinding machine & Milling machine	All machines

VALUE-ADDED SERVICE



- Provide special products, special materials clamping solutions
- Provide magnetic template size private customization service

PART 3

CASE SHARING

GLOBAL
STANDARDIZATION
MOULD COMPONENTS

ONE STOP
SERVICE PLATFORM

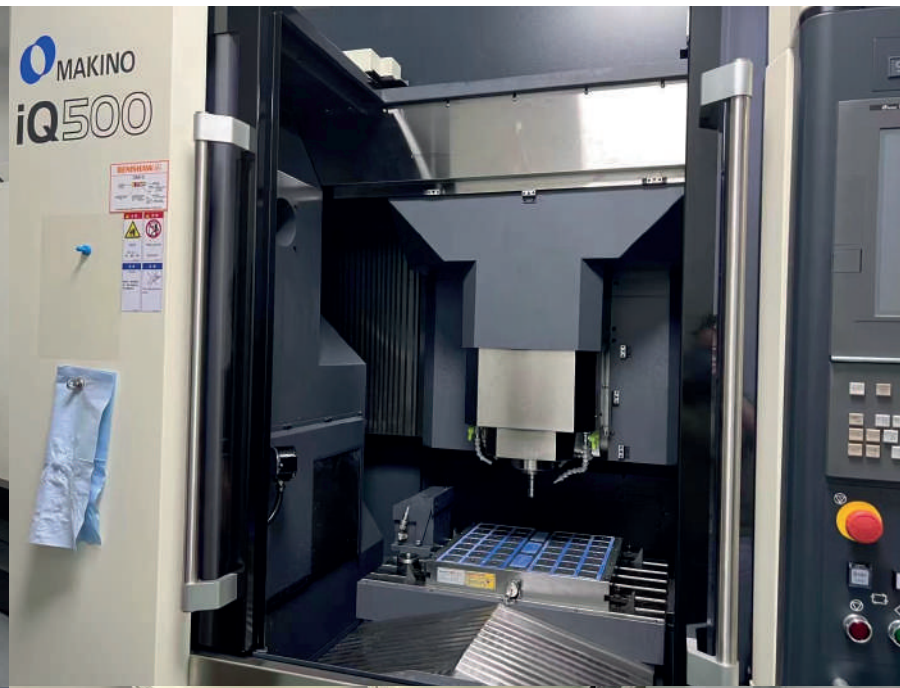
Amaxe Technologies Pvt. Ltd.

www.amaxetech.com

APPLICATION EQUIPMENT



- Milling Machine**
- Engraving machine**
- Vertical lathe**
- Five-axis machine**
- Vertical CNC**
- Horizontal CNC**

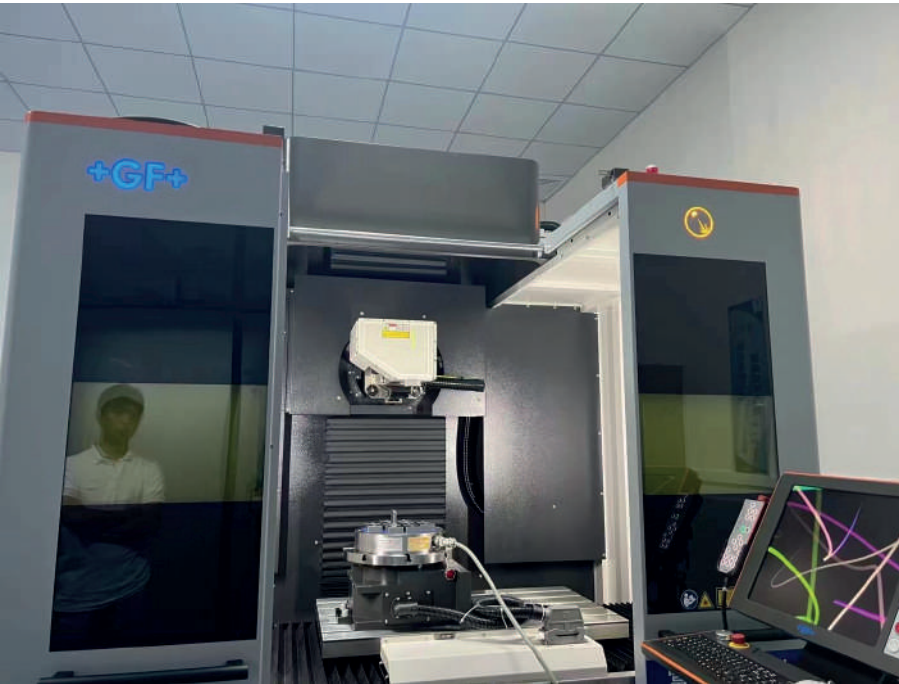


AMAXE
Innovation | Precision | Consistency



MAKINO

MAKINO Machine tools quality partner-----Wmould



+GF+
OKUMA

.....

PART 4
INTERACTIVE

**GLOBAL
STANDARDIZATION
MOULD COMPONENTS
ONE STOP
SERVICE PLATFORM**

Amaxe Technologies Pvt. Ltd.

www.amaxetech.com



AMAXE
Innovation | Precision | Consistency

**VALUE OF
INNOVATION
&
WIN-WIN
COOPERATION**

AMAXE
Innovation | Precision | Consistency



**Your safe and reliable
Mould partner**

