

Character size

DTLBM



Order		Characters	Copper										
DTLB8M-H			H	W1	Q				W				
Code						/	Σ	+		/	Σ	+	-
DTLB1M(1个)	1 2 3 4 5	A B C D E F G H I J K O P Q R S T U V W X Z 1 2 / > < +	4	2.7	3	3	2.7	2.5	2.2	1.8	1.5	2.5	2.2
DTLB2M(2个)	6 7 8 9 0												
DTLB3M(3个)			6.5	4.5	5	5	4.5	4	3.65	3	2.5	4	3.65
DTLB4M(4个)													
DTLB5M(5个)													
DTLB6M(6个)													
DTLB7M(7个)													
DTLB8M(8个)													

V								@ ¥ / P
1M	2M	3M	4M	5M	6M	7M	8M	
4	7	10	12	15	18	20	23	
7	11	16	20	25	29	34	38	
10	17	24	31	39	46	53	60	

Concentricity between the engraving character and the shank is about 0.1;  
 Use ¥ for designating / (slash);  
 Use - for - (minus) ; Use % for □ (space)

	Type	
ABS	DTLR1J	>ABS<
PP	DTLR2J	>PP<
PS	DTLR3J	>PS<
PC	DTLR4J	>PC<
-	-	-

H	W1	Q				W				@ ¥ / P
		/	≈	+		/	≈	+	-	
4	2.7	3	3	2.7	2.5	2.2	1.8	1.5	2.5	2.2
6.5	4.5	5	5	4.5	4	3.65	3	2.5	4	3.65



Isostatic graphite is a new kind of carbon material with half century history in the world. It has a series of features such as excellent conductivity of electricity and heat, high strength at high temperature, high temperature and corrosion resistance, self-lubrication and high volume density, as well as convenience in processing, which could replace copper, aluminum, steel and others metals. It is also closely related to PV, EDM, semiconductor, non-ferrous casting, mould, ceramic sinter, high-temperature corrosion resistant container, nuclear and aerospace industries.

## EDM

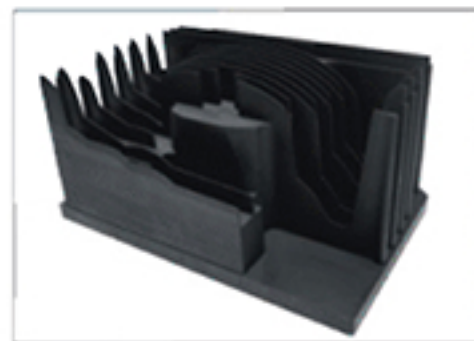
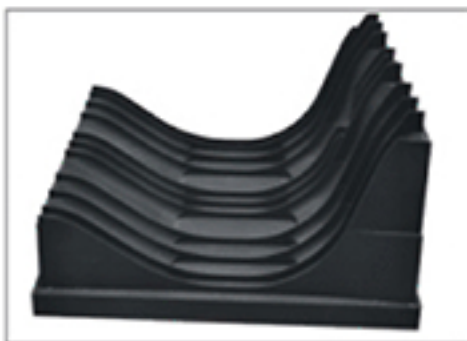
### EDM application

ISEM-3/ISEM-7/ISEM-8  
305\*620\*1000mm

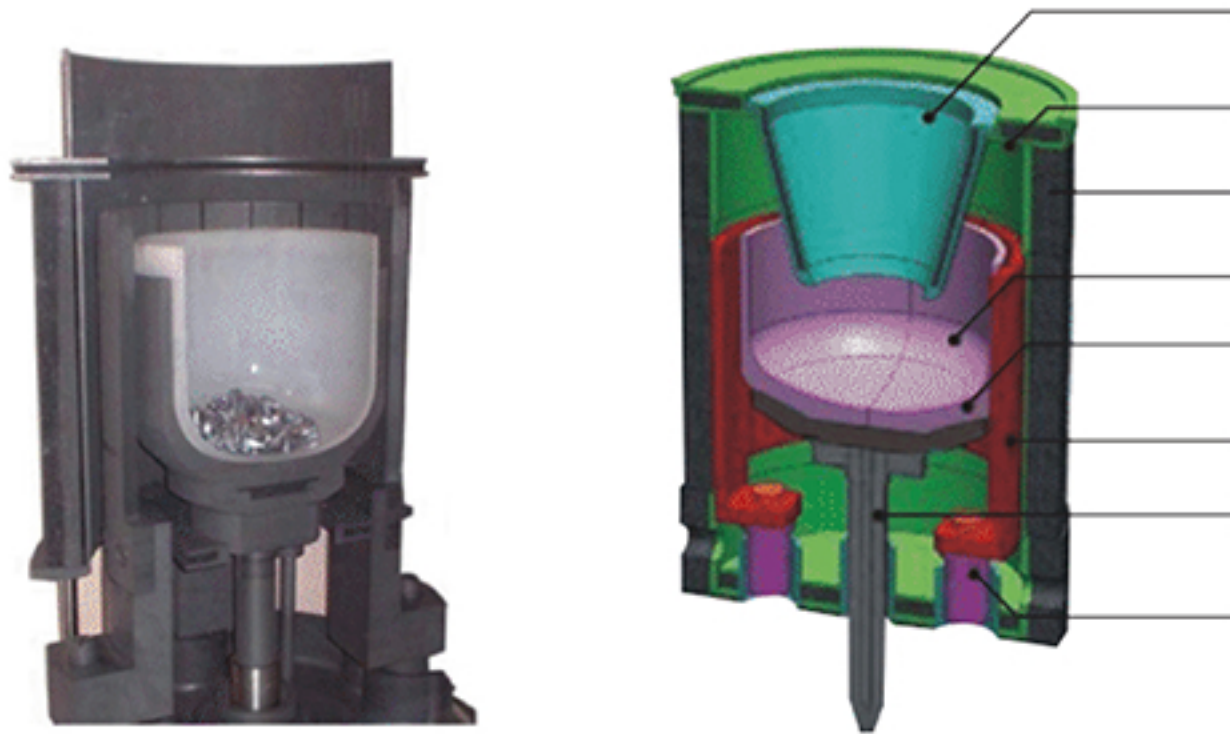
ISO-63/TTK-50/ISO-68  
230\*540\*1000mm

TTK-3/TTK-4/TTK-5  
210\*510\*950mm

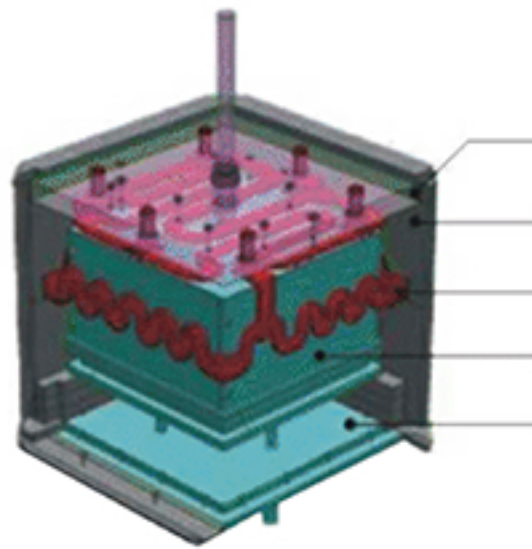
TTK-8/TTK-9  
150\*400\*700mm



Isostatic graphite is formed by cold isostatic pressure, with the feature of high strength, low consumption, fine structure, and uniform physical and chemical properties, etc.







PECVD  
Graphite for PECVD

PECVD C/C  
Graphite boat and C/C frame used in PECVD



Optical fiber application

- High purity graphite components and thermal insulation materials in the process of optical fiber perform manufacturing and wiredrawing.
- Graphite heater, clamping mechanism and other graphite components used for producing optical fiber perform by vertical extension and CVD method.
- Graphite heater, heating unit, center tube, muffle pine, and other components used for optical wiredrawing.
- High-purity insulation felt (including soft carbon felt and solid carbon felt) used in optical fiber wiredrawing furnace.



### Product application

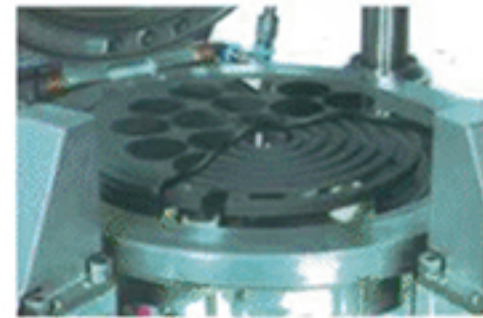
The demand for high purity graphite products continues to be increasing along with the highly integrated development of semiconductor. The isostatic graphite with SiC film surface coating has been widely used in the semiconductor electronics and other fields.

SiC  
SiC Coating isostatic graphite

- High purity and high density
- Heat resistance
- Chemical corrosion resistance
- Low exhaust emission
- Low dust occurrence

## Product introduction

- Graphite susceptor with SiC coating surface(vertical,pancake and single chip type)used for silicon epitaxial equipment.
- MOCVD                      SiC
- Graphite susceptor with SiC coating surface for MOCVD.





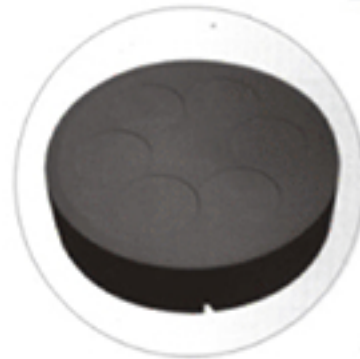
Graphite used for high-temperature heat treatment furnace (vacuum furnace), including furnace lining, support mechanism, heater, guide rail and base; graphite mould and C/C composite material used for industrial heat treatment components; carbon felt, graphite soft felt, graphite solid felt and graphite paper used for thermal insulation; graphite and C/C composite loading mechanism for quenching, sintering, welding and coating; graphite boat, crucible and container, gasket, heater components and heating rod/tube for hard alloy manufacturing; graphite mould, support materials and its parts for foil welding and vacuum brazing; graphite roller and mould for continuously casting stainless steel, and for rolling stainless steel stripe and plate; graphite mould for hot-press sintering; graphite mould for diamond cutter, abrasive tool.

### Application of continuously casting Metallurgy and nonferrous metal

- Graphite mould, graphite crystallizer and other components used for continuously casting nonferrous.
- Metal and for melting precious metal.
- Graphite crucible and graphite crystallizer used for continuously casting aluminum.
- Graphite electrical contact, graphite mould and other components used for uranium welding.



- Graphite electrode, lining block, electric arc chamber cavity, shield and other accessories for ion injection.
- Graphite electrode (grid) for plasma etching.
- Graphite crucible lining for electron beam evaporation (EBE).
- Mould for semiconductor packaging process.
- High grade packaging template and fixture used for semiconductor components (capacitance, resistance, diode, inductance, IC and connector) and IC packaging.
- High purity graphite components used for drawing germanium and its compound monocrystal.
- Graphite boat and other components used for producing semiconductor materials by zone-melting method.
- Graphite boat and other components used for producing germanium oxide by induction heating.



MOCVD SiC



PECVD

