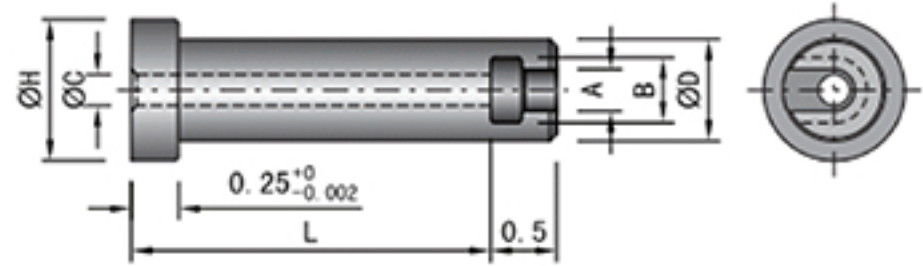


SSLX-P



Features:

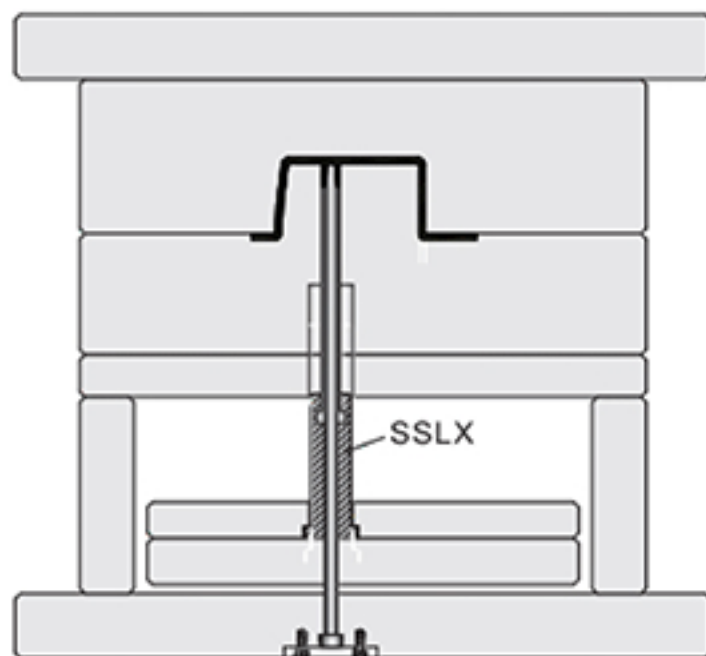
1. lengthens sleeves quickly and inexpensively.
2. Four lengths for more versatility.
3. Special length upon request.

Order SSLX-P13-L

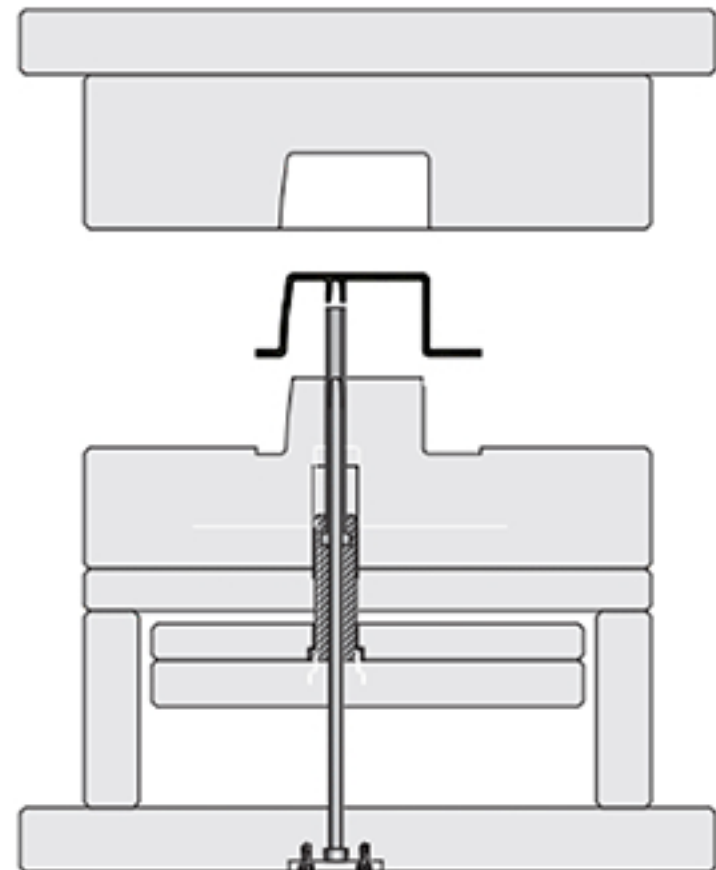
Code	Nominal Sleeve I.D.	D ^{+0 - 0.002}	A ^{+0.002 - 0}	B ^{+0.005 - 0}	C ^{+0.03 - 0}	T ^{+0.002 - 0}	H ^{+0 - 0.10}	@ ¥/P L
SSLX-P13	3/32	0.625	0.193	0.385	0.17	0.188	0.875	2.00-3.50
SSLX-P15	1/ 8		0.224	0.416				
SSLX-P17	5/32		0.255	0.448				
SSLX-P21	3/16	0.875	0.318	0.510	0.22	0.251	1.125	
SSLX-P23	7/32		0.349	0.570				
SSLX-P25	1/ 4		0.380	0.630				
SSLX-P29	5/16	1.000	0.443	0.698	0.34		1.250	
SSLX-P33	3/ 8		0.505	0.760				



Installation Diagram:



Mold closed



Mold opened

