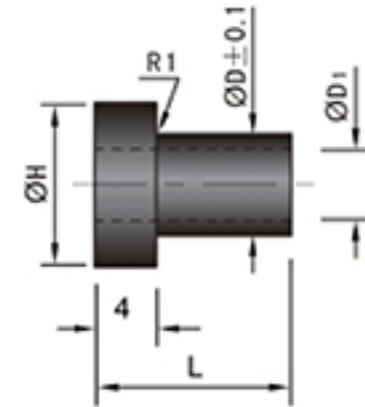


DLKR


 Order DLKR-D-L **M** S45C **H** 38-43HRC

Code	D	L	D1	H	A		@ ¥/P
DLKR	10	16	6.5	13	19	M 6-25	
		24				M 6-35	
	13	16	9	16	25	M 8-30	
		24				M 8-35	
	16	16	11	19	32	M10-30	
		24				M10-40	
	20	16	13	23	38	M12-35	
		24				M12-45	

