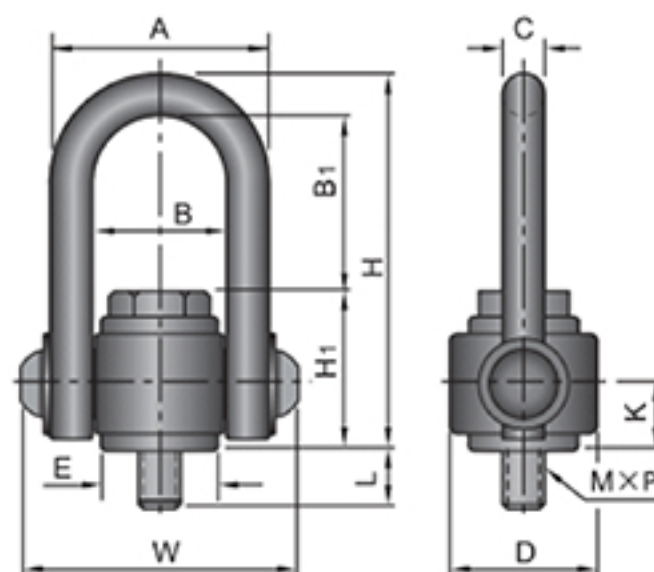


SSLEB

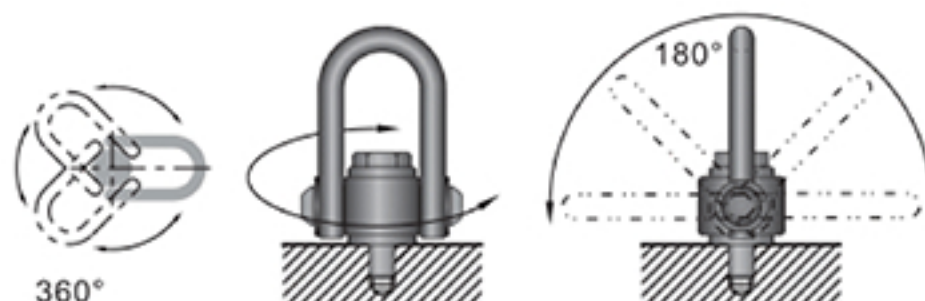

 Order SSLEB-M **M** :SCM435 **H** :28-33HRC

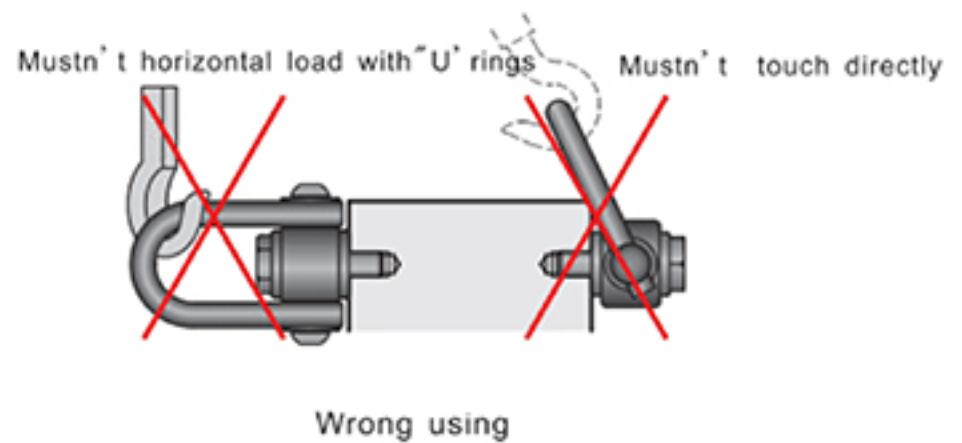
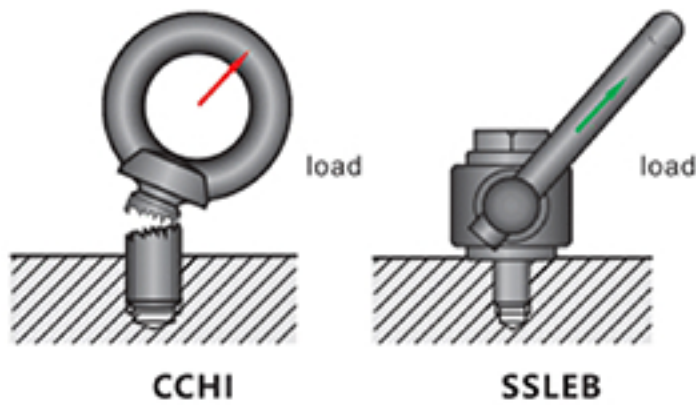
Code	M	A	B	C	D	E	W	K
SSLEB	8	41	25	8	28	22	50	9.7
	10							12.7
	12	50	30	10	32	25	62	15
	16	65	37	14	42	32	79	18
	20	83	47	18	50	38	100	21
	24	102	58	22	60	48	121	24
	30	128	72	28	75	60	150	30
	36	154	90	32	90	70	176	34
	42	176	104	36	105	80	200	42

Code	B1	H	H1	N(kgf)		L	M x P	@ ¥ / P
				A: 1↑	B: 2↑			
SSLEB	33	71	30	2940 ( 300 )	2940 ( 300 )	11	M 8×1.25	
	32		31	4900 ( 500 )	4900 ( 500 )	16	M10×1.5	
	40	88	38	7850 ( 800 )	7850 ( 800 )	21	M12×1.75	
	47	109	48	15690 ( 1600 )	15690 ( 1600 )	27	M16×2.0	
	60	135	57	24520 ( 2500 )	24520 ( 2500 )	31	M20×2.5	
	72	157	63	35300 ( 3600 )	35300 ( 3600 )	37	M24×3.0	
	90	197	79	56870 ( 5800 )	56870 ( 5800 )	50	M30×3.5	
	112	235	91	78450 ( 8000 )	78450 ( 8000 )	57	M36×4.0	
	130	275	109	98060 ( 10000 )	98060 ( 10000 )	67	M42×4.5	

**Features:**

1. Swivel Lifting Eye Bolt is available to rotate 360° against the heavy lift shaft. Also, available to rotate 180° against the lifting direction.
2. Can safely use Swivel Lifting Eye Bolt even when the lifting work from side direction, beveled direction or under tensile condition which are dangerous with the conventional eye bolt of CHI.
3. Compared with CHI, Swivel Lifting Eye Bolt has approx. three times allowance load with same bolt size. Available to use at small place by changing screw diameter M and outer dimension W smaller. Refet to the following table.





#### Installation Guidelines:

- Sit flange on the wider surface area than swivel lifting eye bolt and fasten bolts with right torque.
- After installing swivel lifting eye bolt, need to verify if the shackle moves at 360° against the lift shaft and 180° against the lifting direction.
- As the shackle is designed for longitudinal load, do not directly hook larger bolt than inner diameter of the shackle.
- When using two or more eye bolts, need attention on the loading displacement to single eye bolt depending on the lift angle.
- This item has rotating function for changing lifting direction, however, do NOT continuously rotate eye bolt in loading condition.
- Sudden lifting work is dangerous. Lift carefully with slow in lifting speed.  
(Impact shock may be a cause of bolt or other parts damage)
- Make regular check-up on the change in shape and cracking according to the load working condition and operation frequency.



#### Installation Diagram:

