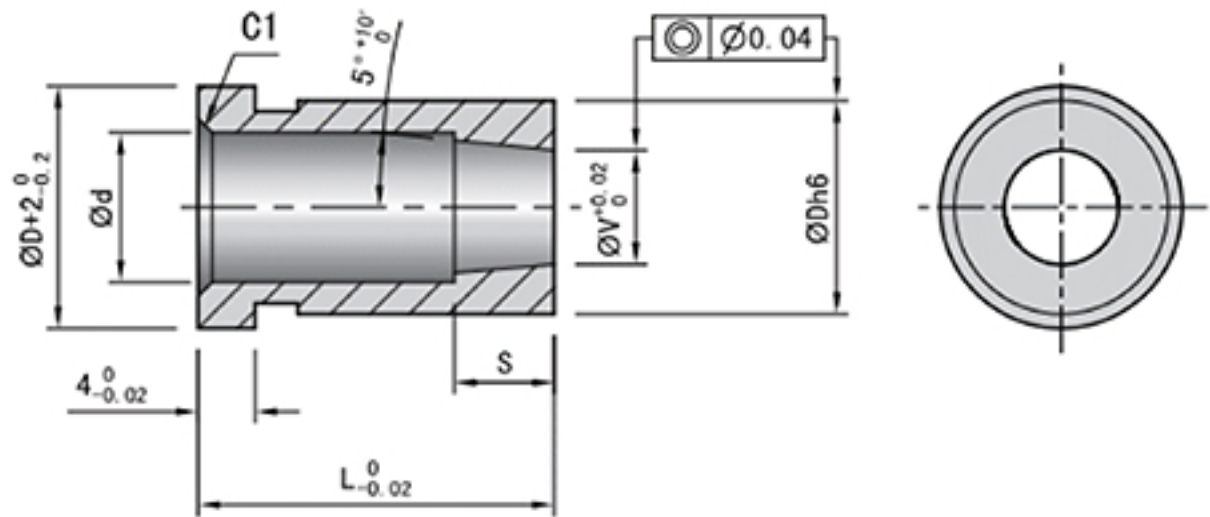


RRLBT

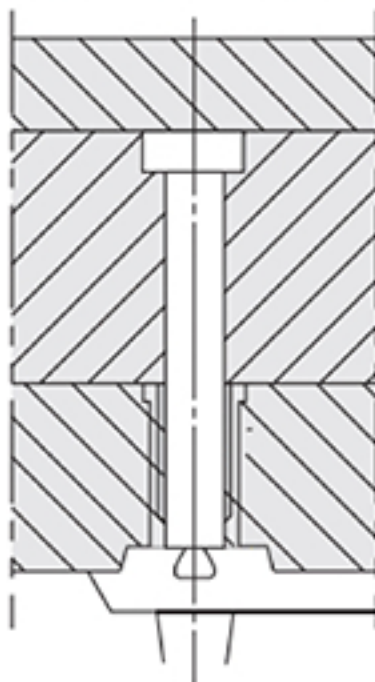


Order RRLBT-NO.-L

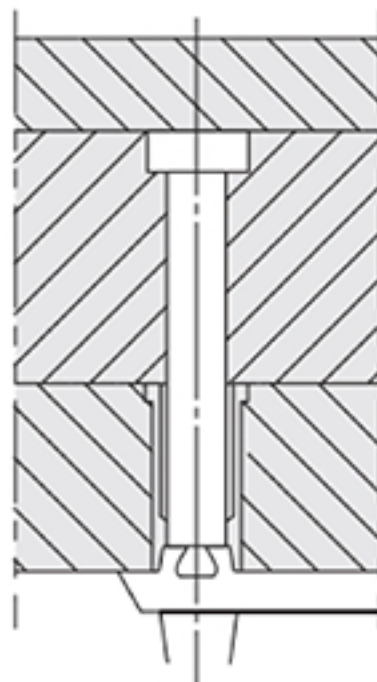
| Code | No. | D | d | S | V | | @ ¥/P | | | |
|-------|-----|----|------|---|-----|--------|-------|-----|-----|-----|
| | | | | | | | L10 | L15 | L20 | L25 |
| RRLBT | 4 | 8 | 4.5 | 4 | 3 | MSWA12 | | | | |
| | 5 | | 5.5 | 5 | 3.5 | | | | | |
| | 6 | 10 | 6.5 | | 4 | MSWA16 | - | | | |
| | 8 | 13 | 8.5 | 7 | 6 | MSWA18 | - | | | |
| | 10 | 15 | 10.5 | | 8 | MSWA20 | - | - | | |



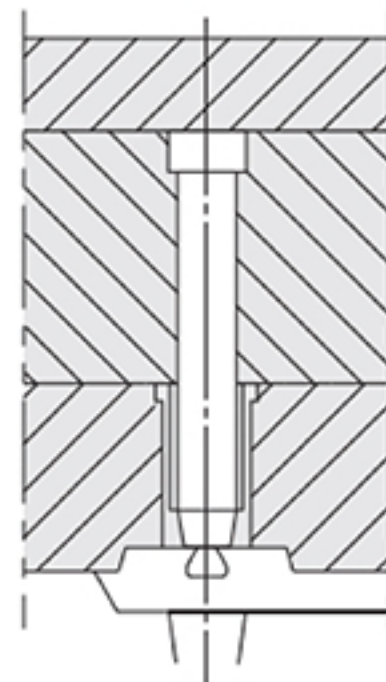
Installation Diagram:



DLBS



DLBST



DLBT

Installation Guidelines:

- Since undercut part of the runner lock pin is processed not to project into runner, no tapering is necessary to the plate.

